

Children with Mental Disorders Resources Referral Manual



Original By: Vanessa Flores Fulgencio (Summer 2013)

Revised By: John Henry Acidera (Summer 2014)

Revised By: Kristen Aquino & Leandra Poole (Summer 2015)

Chaminade University of Honolulu

Editor: Ronnie Mulford, Ph.D.

TABLE OF CONTENTS

O 'ahu

Helpful Hotlines

ACCESS Suicide Prevention/Crisis Line – 1-800-832-3100

Intervention – 24 Hour Hotline

The Parent Line – 1-800-816-1222

Alaka'i Na Keiki.....	8/9
Anodyne Treatment Programs.....	9
Autism Society of Hawai'i.....	10
Bobby Benson Center.....	11
Care Hawai'i.....	12
Catholic Charities.....	12
Center for Cognitive Behavior Therapy – UH.....	13
Child & Family Services – Programs for Children.....	14
Easter Seals Hawai'i – Home & Community Services.....	15
Easter Seals Hawai'i– Kailua Early Intervention.....	15
Easter Seal Hawai'i – Kapolei Early Intervention.....	16
Easter Seals Hawai'i – Waipahu Early Intervention.....	16
Hale Kipa.....	17
Hawai'i Behavioral Health.....	18
Hawai'i Clinical Research Center.....	19
Hawai'i Conference of Seventh Day Adventists.....	19

Hawai'i Counseling & Education Center.....	20
Health, Department of – Behavioral Health Services.....	20
Health, Department of – Child & Adolescent Mental Health (Central, Windward, Leeward Oahu)	21
Health, Department of – Diamond Head Mental Health.....	21
Health, Department of – Family Guidance Center.....	22
Institute for Family Enrichment.....	23
Kahi Mohala Children's Program.....	23
Kokua Kalihi Valley Comprehensive Family Services.....	24
Marimed Foundation.....	25
Mental Health of America Hawai'i.....	25
Music for the Heart Autism Foundation.....	26
National Alliance on Mental Illness – Hawai'i.....	26
North Shore Mental Health.....	27
Parent's & Children Together – Early Head Start.....	28
Parks & Recreation, Dept. of (C & C).....	29
Queens Medical Center.....	29
Salvation Army – Family Treatment Services.....	30
Susannah Wesley Community Center.....	31
Wai'anae Coast Community Mental Health Center.....	31
YMCA – Kaimuki – Waialae.....	32
YMCA - Kalihi.....	32
YMCA – Leeward.....	33
YMCA – Nu'uuanu.....	33

YMCA of Honolulu Central Branch.....	34
YMCA – West O’ahu/Mililani.....	34
YMCA – Windward.....	35

Kaua’i

Helpful Hotlines

ACCESS Suicide Prevention/Crisis Line – 1-800-832-3100
 Intervention – 24 Hour Hotline
 The Parent Line – 1-800-816-1222

Hale’opio Kaua’I.....	36
Hina Mauka – Teen Care Kaua’I High School.....	36/37
Ke Ala Pono Recovery Center.....	37
YMCA of Kaua’i.....	37/38

Maui

Helpful Hotlines

ACCESS Suicide Prevention/Crisis Line – 1-800-832-3100
 Intervention – 24 Hour Hotline
 The Parent Line – 1-800-816-1222

Aloha House – Children & Adolescent Outpatient Services.....	39
West Maui Counseling Center	39/40
Health, Dept. of – Maui Family Guidance.....	40
Health, Dept. of – Maui Child & Adolescent Mental Health.....	40
Maui Youth & Family Services.....	41
YMCA, Maui Family.....	41

Big Island

Helpful Hotlines

ACCESS Suicide Prevention/Crisis Line – 1-800-832-3100

Intervention – 24 Hour Hotline

The Parent Line – 1-800-816-1222

Hawai'i Behavioral Health – Hilo.....	42
Institute for Family Enrichment – Hilo.....	42
McKenna Recovery Center.....	43
YMCA – The Island of Hawai'i.....	43/44
YMCA – Waiakea Settlement.....	44

Lana'i

Helpful Hotlines

ACCESS Suicide Prevention/Crisis Line – 1-800-832-3100

Intervention – 24 Hour Hotline

The Parent Line – 1-800-816-1222

Heath, Dept. of – Maui Family Guidance Center – Lana'i.....	45
Lana'i Youth Center.....	45/46

Moloka'i

Helpful Hotlines

ACCESS Suicide Prevention/Crisis Line – 1-800-832-3100

Intervention – 24 Hour Hotline

The Parent Line – 1-800-816-1222

Heath, Dept. of – Maui Family Guidance Center – Moloka'i.....	47
---	----

Helping Children by Supporting Parents and Strengthening Families

Helpful Hotlines

ACCESS Suicide Prevention/Crisis Line – 1-800-832-3100

Intervention – 24 Hour Hotline

The Parent Line – 1-800-816-1222

-O'ahu

Easter Seals Hawai'i– Kailua Early Intervention.....	48
Easter Seals Hawai'i – Kapolei Early Intervention.....	49
Hawai'i Behavioral Health.....	50
Hawai'i Counseling & Education Center Inc.....	51
Hawai'i Families as Allies.....	52
Institute for Family Enrichment.....	53
Kokua Kalihi Valley Comprehensive Family Services.....	53
Learning Disability Association of Hawai'i.....	54
National Alliance on Mental Illness – Hawai'i.....	54
Parent's & Children Together – Early Head Start.....	55/56

-Kaua'i

Hale'opio Kaua'I, Inc.....	57
Hina Mauka – Teen Care Kaua'i High School.....	58

-Maui

Aloha House Inc Children & Adolescent Outpatient Svcs..... 58

Health, Dept of – Maui Family Guidance Center..... 59

Health, Dept. of – Maui Child & Adoles. Mental Health..... 59

-Big Island

Hawaii Behavioral Health – Hilo..... 60

Institute for Family Enrichment – Hilo..... 60

YMCA - Waiakea Settlement..... 61

-Lana'i

Health, Dept. of – Maui Family Guidance Ctr. – Lana'i..... 62

-Moloka'i

Health, Dept. of – Maui Family Guidance Ctr.- Moloka'i..... 63

**** The listings in this community referral resource manual are for reference only, and are not intended to be an endorsement, nor offer or replace medical advice.**

O'ahu

Provider Name:	Alaka'i Na Keiki
Service Description:	The Mission of Alaka'i Na Keiki is to provide state-of-the-art psychological and educational services for children, adolescents, and adults. Through clinically sound, outcome-oriented interventions, our goals are to reduce symptomatology, and to improve overall functioning
Services Provided:	<ul style="list-style-type: none"> • Specialized Evaluations, including ADHD, Learning Disabilities, Autism • Comprehensive Mental Health Evaluations • Individual and Family Therapy • Diagnostic-Specific Therapy (e.g., self-esteem, social skills, anger management, foster/adoption issues, trauma and abuse issues) • Specialized Skills Trainer Services, including Applied Behavior Analysis, Discrete-Trial Training, Floor Time, Picture Exchange System (PECS), Pivotal Response Training, Executive Functioning Training, Verbal Behavior, and our "Super Aunty" program • School Consultation • Parent Training/Workshops
State Contracted Services:	<ul style="list-style-type: none"> • Comprehensive Assessment, Focused Assessment, and Summary Annual Assessment, and Individual, Family and Group Therapy • Intensive In-Home and Community Based Services • Personal Assistance/Habilitation Services, Levels 1, 2, and 3 • Habilitation Supported Employment • Chore Services • Respite Services • Training and Consultation for Caregivers by Behaviorists or Licensed Psychologists • Psychological Assessment and Consultation • Skills Trainer Services • Intensive Consultant Services for Skills Trainer and Parents • Behavioral Instructional Support Services (BISS) by doctoral and master's level professionals to the classroom consultation, service plan development and monitoring • Parent Education/Parent Training to understand and manage challenging behaviors • Paraprofessional Support Services (in the school and/or community)

Cost:	Services provided are covered by most insurances, including HMSA, HMA, TriCare, HMSA Quest, Aloha Care Quest, and Medicaid.
Eligibility:	Alaka'i Na Keiki specializes in working with the full range of childhood and adolescent disorders, including ADHD/LD, Autism, Oppositional and Conduct Disorders, Foster/Adoptive Issues, and Physical, Emotional and/or Sexual Abuse. The agency also works with gifted and high achieving children.
Contact Information:	<p>(808) 532-5990 (808) 532-7771 Monday thru Friday 7:30 a.m. to 4:30 p.m.</p> <p>Main Honolulu Office: 1100 Alakea St. 9th floor Alakea Corporate Tower Honolulu, HI 96813</p> <p>Windward Office: 45-1144 Kamehameha Hwy. American Savings Building Suite 301B Kaneohe, HI 96744</p> <p>West Oahu Office: 84-1170 Farrington Hwy., Suite 7. Waianae, HI 96792</p> <p>Web: www.alakainakeiki.com</p>

Provider Name:	Anodyne Treatment Programs
Service Description:	Evaluates and treats alcoholism and drug addiction, eating disorders and Compulsive gambling. Provides psychotherapy for adults, adolescents and children, trauma resolution (childhood and adult, spouse abuse, and child abuse, assaults, rape), and anger-management program.
Services Provided:	<ul style="list-style-type: none"> • Anger Management • Child Abuse Counseling • Drug Day Treatment • Mental Health Care and Counseling • Sexual Assault Counseling • Spouse/Domestic Partner Abuse Counseling
Eligibility:	Must speak English
Cost:	Vary depending on services provided; most services covered by insurance.
Contact Information:	1188 Bishop St. Suite 3205 Honolulu, HI 96913 (808) 545-7706 Main (808) 574-1626 Fax

Provider Name:	Autism Society of Hawaii
Service Description:	The Autism Society of Hawaii is a 501(c)(3) organization serving families and individuals touched by autism and autism spectrum disorders. We are the Hawaii chapter of the National Autism Society headquartered in Bethesda, Maryland.
Services Provided:	<ul style="list-style-type: none"> • Newsletters with latest information on autism, ASD and related news • Discounts to attend Autism Society of Hawaii events • Discounts on Autism Society of Hawaii merchandise
Eligibility:	People with Autism or other similar diseases; Individuals who would like to support the foundation
Cost:	<p>Membership fees are as follows:</p> <ul style="list-style-type: none"> • \$25 Household • \$50 International • \$75 Champion • \$150 Professional • \$1,500 Lifetime
Contact Information:	<p>1600 Kapiolani Blvd. #620 Honolulu, HI 96814</p> <p>Email: autismhi@gmail.com Web: www.autismsocietyofhawaii.org</p>



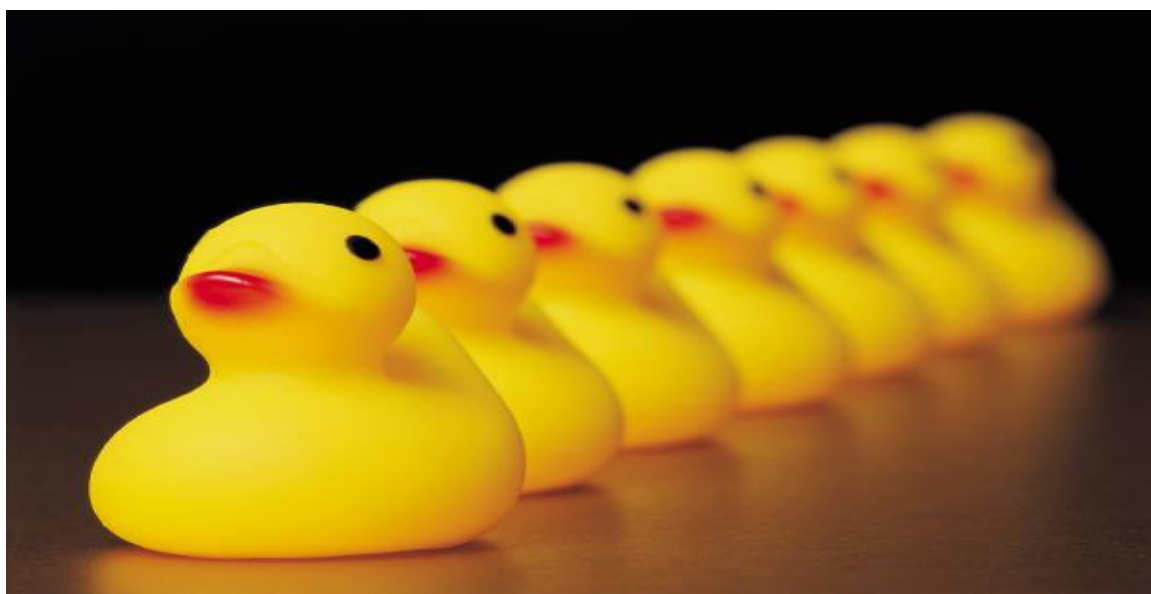
Provider Name:	Bobby Benson Center
Service Description:	The Bobby Benson Center is a residential and outpatient, community-based social-learning model program designed to provide adolescents, ages 13-17, with the opportunity to gain the skills needed to develop a lasting recovery from dependency on drugs or alcohol. Specifically, the treatment program is designed to help break through the denial of drug and alcohol addiction, develop skills to manage the ups and downs of life and begin taking personal responsibility for actions.
Services Provided:	<ul style="list-style-type: none"> • A trauma informed environment with staff that focuses on providing therapeutic relationships in helping the youth to heal from past experiences as well as substance abuse • A Chemical Dependency Program in which youth can choose from either: AA/NA which integrates the 12 steps or SMART (Self Management and Recovery Tools) which includes: 1) building motivation 2) coping with urges 3) problem solving 4) lifestyle balance • Individual, group and family therapy to address trauma as well as emotional, behavioral and substance use. Family participation is a key component in the youth's success. Family Therapy is offered to help family members cope, understand and heal as a unit. • A drug-free setting staffed by professionals with specialized experience in adolescent drug and alcohol treatment and knowledge of the unique needs of young people • A structured daily schedule designed to treat the young person physically, psychologically, socially and spiritually • A variety of activities to help the teen to learn to have fun without drugs or alcohol • Peer groups giving teens the opportunity to learn how to reinforce healthy ways to cope with life's demands through honest feedback from their own peers
Eligibility:	<p>The following criteria must be met before acceptance into the program:</p> <ul style="list-style-type: none"> • Males and females between the ages of 13 and 17 years. • The client voluntarily agrees to participate in treatment. • The client is mentally competent and able to commit to treatment. • Clients requiring medical detoxification and/or medical supervision will be referred to a nearby hospital for 24 to 72 hours of observation prior to admission to the Bobby Benson Center (BBC). The Clinical Director will then determine the final decision regarding admission to BBC.
Cost:	The Center has a fee-for-service contract with the Department of Health (Child and Adolescent Mental Health Division). Our facility also participates with all major health insurance plans.
Contact Info:	<p>56-660 Kamehameha Hwy Kahuku, HI 96731</p> <p>(808) 293-7555 Main For neighbor islands, call toll-free at 877-393-7555</p> <p>Web: www.bobbybenson.org</p>

Provider Name:	Care Hawaii, Inc.
Service Description:	CARE was founded in 1999 to provide outpatient mental health services to Hawaii's children, adolescents and adults through a network of mental health professionals committed to best practices in service delivery.
Services Provided:	<ul style="list-style-type: none"> • School Based Behavioral Health (SBBH) • Individual and Group Counseling • Parent/Family Counseling and Training • Educational Planning • Behavioral Instructional Support Services • Paraprofessional Support Services • Early Intervention (0-3)
Eligibility:	Children's services are provided to youth identified as in need of mental health services in order to benefit from their educational experience.
Cost:	Free
Contact Info:	<p>875 Waimanu St. #614 Honolulu, HI 96813</p> <p>(808) 533-3936 Main (808) 791-6198 Fax</p> <p>Web: www.carehawaii.info</p>

Provider Name:	Catholic Charities
Service Description:	Catholic Charities Hawai'i offers a number of programs that help children and youth address physical, emotional, and psychological needs through services that focus on building confidence and core values while strengthening families.
Services Provided:	<ul style="list-style-type: none"> • Counseling • Foster or Relative Placement Services
Eligibility:	Not limited
Cost:	Free
Contact Information:	<p>Clarence T. C. Ching Campus 1822 Ke'eaumoku Street Honolulu, HI 96822</p> <p>(808) 524-4673 Main (808) 521-4357 Help Line</p> <p>Web: www.catholiccharitieshawaii.org</p>

Provider Name:	Center for Cognitive Behavior Therapy - UH
Service Description:	The Center for Cognitive Behavior Therapy is a training, research and treatment center staffed by clinical psychologists, postdoctoral fellows and doctoral students in clinical psychology at the University of Hawaii.
Services Provided:	<p>At the Center for Cognitive Behavior Therapy (CCBT), we provide:</p> <ul style="list-style-type: none"> • Mental health assessment and psychosocial treatment services for a range of problems for youth up to age 18. • Comprehensive mental health assessments for both Hawaii State Department of Education (DOE) and Department of Health (DOH) registered youth, consistent with standards outlined in the Interagency Performance Standards and Practice Guidelines. • Once a child has completed the evaluation process, he or she may be referred for treatment at the CCBT. Evidence-based psychosocial treatments are offered for a range of problems, including anxiety, trauma, depression, ADHD, and disruptive behavior. All treatments offered at the CCBT are tailored to the youth's and family's specific needs. Measures of client outcome and progress are reviewed prior to, during, and upon completion of treatment.
Eligibility:	The Center for CBT serves clients up to age 18. Because our clinic is not designed to assess or treat youth with pervasive developmental delays or psychoses, youth with these problems are only accepted on a case by case basis.
Cost:	Clients referred by the Departments of Education or Health pay no out-of-pocket costs. Privately referred clients are accepted only when openings are available and are provided services on a sliding fee scale based on household income and size. No third party insurance is accepted.
Contact Information:	<p>Location: Krauss Hall 101, at 2500 Dole Street on the Mānoa Campus.</p> <p>(808) 956-9559 Main (808) 956 2218 Fax</p> <p>Mailing Address: 2530 Dole Street, Sakamaki C-400 Honolulu, HI 96822</p> <p>Web: www2.hawaii.edu/~cmueller/CCBTb.pdf</p>

Provider Name:	Child & Family Services – Programs for Children
Service Description:	We are partners with Hawaii’s families to help them address serious life issues, with life-changing results. We believe that positive change can happen. We help families move from the impossible, to the possible, to new possibilities.
Services Provided:	<ul style="list-style-type: none"> • Ka Pa Ola (community based residential) a residential home for teenage girls to help them identify and developing their own strengths and resources so they have a better opportunity to make a successful transition into adulthood. • Healthy Families (formerly <i>Healthy Start</i>)
Eligibility:	<ul style="list-style-type: none"> • Ka Pa Ola Referred by the Department of Health and Department of Human Services Does not pose an imminent threat to others Is not acutely psychotic or severely developmentally disabled Able and willing to cooperate and participate in the formulation of treatment objectives and planning • Healthy Families Eligibility is determined prenatally or in the hospital at the time of birth.
Cost:	Free
Contact Information:	91-1841 Fort Weaver Road Ewa Beach, HI 96706 (808) 681-1580 Main (808) 681-3202 Fax (808) 681-3500 Administration (808) 681-1430 Service/Intake



Provider Name:	Easter Seals Hawai'i – Home & Community Services
Service Description:	Provides extended school care and day care during school breaks for developmentally disabled children. Provides recreational activities, e.g., music, games, sports, and excursions. Provides caregivers with relief from the 24-hour demand placed on families in caring for their disabled child(ren). Allows the individual with a disability to participate in activities within the community.
Services Provided:	<ul style="list-style-type: none"> • Children's Out of Home Respite Care
Eligibility:	Age 4 - 20 years old.
Cost:	Vary depending on services provided
Contact Information:	710 Green Street Honolulu, HI 96813 (808) 536-1015 Main (808) 536-3765 Email: info@eastersealshawaii.org Web: www.eastersealshawaii.org

Provider Name:	Easter Seals Hawai'i– Kailua Early Intervention
Service Description:	Early Intervention services providing comprehensive coordinated services including peripheral, occupational, special education, care coordination, and speech therapy.
Services Provided:	<ul style="list-style-type: none"> • Developmental Assessment • Information and Referral • Occupational Therapy • Parent Support Groups • Physical Therapy • Speech/Language Pathology • Special Education
Eligibility:	Children and adults with disabilities.
Cost:	Vary depending on services provided.
Contact Information:	970 North Kalaheo Avenue Kailua, HI 96734 (808) 261-4999 Main (808) 261-1120 Main Email: info@eastersealshawaii.org Web: www.eastersealshawaii.org

Provider Name:	Easter Seals Hawai'i – Kapolei Early Intervention
Service Description:	Early Intervention services providing comprehensive coordinated services including peripheral, occupational, special education, care coordination, and speech therapy.
Services Provided:	<ul style="list-style-type: none"> • Developmental Assessment • Information and Referral Occupational Therapy • Parent Support Groups • Physical Therapy • Special Education • Speech/Language Pathology • Volunteer Recruitment/Placement
Eligibility:	Children and adults with disabilities.
Cost:	Vary depending on service provided.
Contact Information:	<p>(808) 678-3754 Main (808) 686-9538 Fax</p> <p>92-461 Makakilo Drive Kapolei, HI 96707</p> <p>Email: info@eastersealshawaii.org Web: www.eastersealshawaii.org</p>

Provider Name:	Easter Seals Hawai'i – Waipahu Early Intervention
Service Description:	Early Intervention services providing comprehensive coordinated services including peripheral, occupational, special education, care coordination, and speech therapy.
Services Provided:	<ul style="list-style-type: none"> • Developmental Assessment • Information and Referral Occupational Therapy • Parent Support Groups • Physical Therapy • Special Education • Speech/Language Pathology • Volunteer Recruitment/Placement
Eligibility:	Children and adults with disabilities.
Cost:	Vary depending on services provided.
Contact Information:	<p>94-144 Farrington Hwy, Unit 115 Waipahu, HI 96797</p> <p>(808) 678-3814 Main (808) 678-3820 Fax</p> <p>Email: info@eastersealshawaii.org Web: www.eastersealshawaii.org</p>

Provider Name:	Hale Kipa Inc.
Service Description:	Hale Kipa's Intensive In-Home Program provides comprehensive, behavioral, community-based services for children and families known to the Child and Adolescent Mental Health Division (CAMHD). The services are based on an intensive, individualized, strengths-based approach that focuses on the youth's and family's needs and goals. A dedicated, geographically based team of Licensed Clinicians, Therapists and trained therapeutic staff are assigned to assist and support young persons and their families to meet the identified goals of their Coordinated Service Plan (CSP) and reduce the need for unnecessary Out-of-Home therapeutic placements. Services are designed to be both culturally sensitive and developmentally fitting to the strengths and needs of youth and families.
Services Provided:	<ul style="list-style-type: none"> • Youth Outreach • Prevention/Intervention • Adolescent/Youth Counseling • Home Based Mental Health Services for At Risk Youth • Home Based Mental Health Services for Children and Youth with • Emotional Disturbance • Foster Care
Eligibility:	Referred by CAMHD Family Guidance Centers
Cost:	Free
Contact Information:	<p>(808) 589-1829 Ext. 251 Main – Intensive In-Home Program</p> <p>615 Piikoi Street Honolulu, HI 96814</p> <p>Web: www.halekipa.org</p>



Provider Name:	Hawaii Behavioral Health
Service Description:	Hawaii Behavioral Health (HBH) is a leading regional resource for high quality community-based educational, social and behavioral health services for children, adolescents, and families throughout the state of Hawaii. Our service continuum has included psychological assessments, outpatient (individual and family therapy) services, intensive home-based services, adolescent day treatment, therapeutic foster care, case management/care coordination, therapeutic aide and biopsychosocial rehabilitative services, services to youth and families with autistic spectrum disorder, and foster/adoptive parent training, certification and approval. HBH's program philosophy of care seeks to empower clients through a provision of services that are individualized, child and family- centered, strengths-based, and flexible to changing needs with an emphasis on self-sufficiency.
Services Provided:	<ul style="list-style-type: none"> • Professional Intensive Instructional Service Consultation (IISC); • Skills Training; and Identified and referred by Hawaii Department of Education under IDEIA. • Individual and group counseling; Parent counseling and training ; • School consultation for students with behavioral disorders; and Identified and referred by Hawaii Department of Education under IDEIA. Behavioral Treatment Plans • Training and assistance to families • For infants and toddlers with serious behavior concerns (autism/PDD) under the age of three referred by the Department of Health, Early Intervention Program • Therapeutic Foster Care
Eligibility:	Mental Health/Education Services: children, youth, and families.
Cost:	Services paid for by the state
Contact Information:	<p>210 Ward Ave., Suite 219B Honolulu, HI 96814</p> <p>(808) 585-1424 Main (808) 585-0379 Fax</p> <p>Email: oahu@hibh.org Web: www.hibh.org</p>

Provider Name:	Hawai'i Clinical Research Center
Service Description:	Free Confidential Mental Health Screening for inclusion in outpatient and Inpatient Clinical Research Trials of investigational medication for FDA approval. Enrolled subjects receive free medical evaluations and study medication, under M.D. supervision. Outpatient Study visits are usually about an hour once a week for very close monitoring of the subject's symptoms. Some studies are Inpatient, with stays in the facility for up to 8 weeks. During the study, they can help find housing and other resources, and work with other agencies for discharge planning.
Services Provided:	<ul style="list-style-type: none"> • Mental Health Care and Counseling • Mental Health Evaluation
Eligibility:	Not limited. No limitation for telephone eligibility screening, however for final inclusion, each study's particular criteria are applied.
Cost:	No fee for Service
Contact Information:	<p>(808) 538-2880 Main</p> <p>1286 Queen Emma St Honolulu, HI 96813</p> <p>Web: www.hawaiiiclinicalresearch.com</p>

Provider Name:	Hawai'i Conference of Seventh Day Adventists - Aiea
Service Description:	Offers spiritual counseling.
Services Provided:	<ul style="list-style-type: none"> • Camps • Pastoral Counseling
Eligibility:	Not limited
Cost:	Vary depending on services offered.
Contact Information:	<p>(808)-488-9855</p> <p>99-005 Moanalua Rd. PO Box 248 Aiea HI 96701</p> <p>Web: www.aieasdachurch.org</p>

Provider Name:	Hawai'i Counseling & Education Center Inc
Service Description:	Provides individual, family and couples counseling for children, adolescents and adults. Offers outpatient substance abuse counseling and substance abuse assessments. Also provides domestic violence and
Services Provided:	<ul style="list-style-type: none"> • Camps • Adolescent/Youth Counseling • Alcoholism Day Treatment • Anger Management • Family Counseling • Group Counseling • Individual Counseling • Marriage Counseling • Mental Health Care and Counseling Outpatient • Drug Detoxification • Parenting Education • Sexual Assault Treatment • Spouse/Domestic Partner Abuse Counseling • Stress Management
Eligibility:	Not limited
Cost:	Varies, depending on services provided.
Contact Information:	<p>(808) 254-6484 Main (808) 254-6427 Fax</p> <p>970 N. Kalaheo Ave, Ste. C-201 Kailua, HI 96734</p> <p>Email: hcec@lava.net Web: www.hcechawaii.com</p>

Provider Name:	Health, Dept. of – Behavioral Health Service
Service Description:	Administers mental health and substance abuse programs for the state, including the Adult Mental Health Division, Children and Adolescent Mental Health Division and Alcohol and Drug Abuse Division.
Services Provided:	<ul style="list-style-type: none"> • Alcohol Abuse Education/Prevention • Drug Abuse Education/Prevention • Mental Health Care and Counseling
Eligibility:	Not limited
Cost:	Free assessment upon intake
Contact Information:	<p>(808) 586-4400 Main</p> <p>1250 Punchbowl Street Honolulu, HI 96813</p> <p>Email: health.hawaii.gov/amhd Web: www.hcechawaii.com</p>

Provider Name:	Health, Dept. of – Child & Adolescent Mental Health
Service Description:	Provides community-based, child-focused and family-centered comprehensive behavioral health care (to "Felix" identified children). Serves children, adolescents and their families who may suffer from a variety of severely emotional, behavioral or social adjustment problems. Provides treatment planning, direct treatment and care coordination. Provides consultation to Department of Education personnel and private
Services Provided:	<ul style="list-style-type: none"> • Mental Health Evaluation • Mental Health Care and Counseling
Eligibility:	Felix-class children and adolescents up to age 21 who are in need of mental health services.
Cost:	Free
Contact Information:	<p>(808) 733-9333 Main</p> <p>54-010 Kukuna Road Hau'ula, HI 96717</p> <p>Email: health.hawaii.gov/camhd/ Web: www.hcechawaii.com</p>

Provider Name:	Health, Dept. of – Diamond Head Mental Health
Service Description:	Provides community-based, child-focused and family-centered comprehensive behavioral health care. Serves children, adolescents and their families who may suffer from a variety of severely emotional, behavioral or social adjustment problems. Provides evaluation, treatment planning, direct treatment and case management. Provides consultation to Department of Education personnel and private agencies.
Services Provided:	<ul style="list-style-type: none"> • Mental Health Care and Counseling
Eligibility:	Felix-class children and adolescents up to age 21 who are in need of mental health services.
Cost:	Free
Contact Information:	<p>(808) 733-9393 Main (808) 733-9377 Fax</p> <p>3627 Kilauea Ave Room 401 Honolulu, HI 96816</p> <p>Email: webmail@mail.health.state.hi.us Web: www.hcechawaii.com</p>

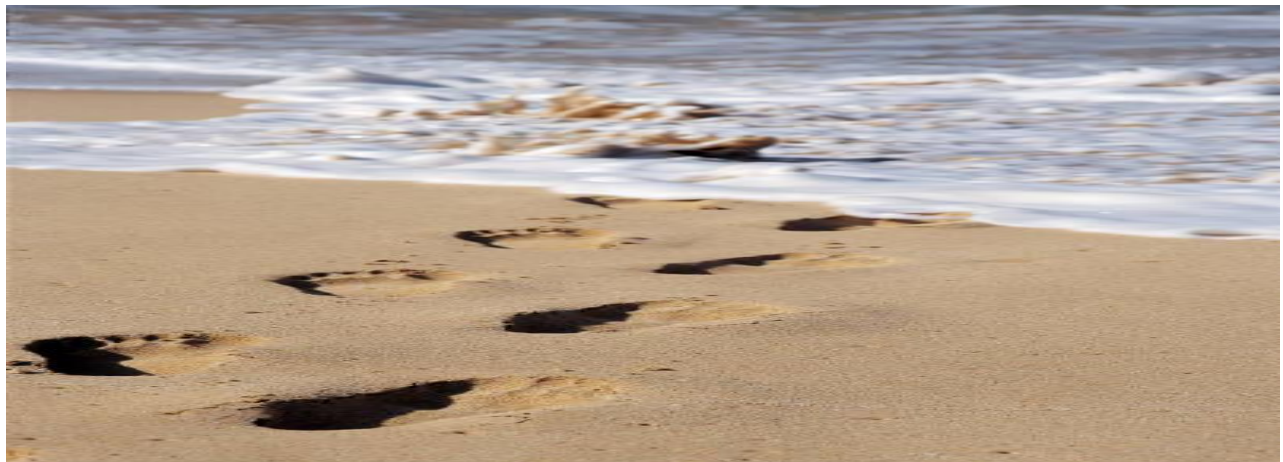
Provider Name:	Health, Dept. of – Family Guidance Center Central, Windward, Leeward (Oahu)
Service Description:	Operates a joint program between the Department of Health and the Department of Education, which services special education students between the ages of 12 to 20. Provides individual, group, family and Recreational therapy to youth and their families. Provides an academic component.
Services Provided:	<ul style="list-style-type: none"> • Mental Health Care and Counseling • Special Education
Eligibility:	Special education students (emotionally impaired) age 13 to 20.
Cost:	Free
Contact Information:	<p>Central Oahu Family Guidance Center (808) 453-5900 Main</p> <p>860 Fourth Street, 2nd Floor Pearl City, HI 96782</p> <p>Leeward Oahu Family Guidance Center (808) 692-7700</p> <p>601 Kamokila Blvd. #355 Kapolei, HI 96707</p> <p>Windward Oahu Family Guidance Center (808) 808-233-3770 Main</p> <p>45-691 Keaahala Road Kaneohe, HI 96744</p>



Provider Name:	Institute for Family Enrichment, The
Service Description:	Home-based mental health services for children, adolescents and families who need therapeutic intervention in their natural environment. Services are scheduled according to need, within a range of intensity and duration, according to a treatment plan.
Services Provided:	<ul style="list-style-type: none"> • Child Abuse Prevention • Family Counseling • Adolescent/Youth Counseling • Child Abuse Counseling • Parent Counseling
Eligibility:	Families with children, 3-21 years old. Referred by DOH Family Guidance Centers.
Cost:	Referrals covered by state funds.
Contact Information:	<p>(808) 597-8009 Main (808) 591-1017 Fax</p> <p>615 Pi'ikoi St, Suite 105 Honolulu, HI 96814</p> <p>Email: mspence@tiffe.org Web: www.tiffe.org</p>

Provider Name:	Kahi Mohala Children's Program
Service Description:	Uses a closely supervised, structured program to teach children more effective ways to express their feelings and gain self-control to function at home, school and in the community. Provides individual, group, and family therapy, occupational and recreational therapy. Maintains private school on grounds during treatment to continue academic education. Provides parent support and education group, and residential inpatient and partial hospitalization (day treatment) and outpatient services.
Services Provided:	<ul style="list-style-type: none"> • Children's Psychiatric Inpatient Units • Mental Health Care and Counseling
Eligibility:	Children 3-12 years old.
Cost:	Vary depending on services provided
Contact Information:	<p>(808) 671-8511 Main (808) 677-2570 Fax</p> <p>91-2301 Fort Weaver Road Ewa Beach, HI 96706</p> <p>Web: www.kahimohala.org/svcs/in/res/child.html</p>

Provider Name:	Kokua Kalihi Valley Comprehensive Family Services
Service Description:	Kokua Kalihi Valley (KKV) is a community organization with the mission for "healing and reconciliation in the Kalihi Valley community". KKV serves residents in Kalihi Valley (census tracts 61-65), a Medically Underserved Area and Health Personnel Shortage Area, as designated by the Public Health Service. Services include: dental, medical, family planning, WIC nutrition, behavioral health, elderly services, youth development, case management, transportation, translation, outreach, professional education and literacy for young children.
Services Provided:	<ul style="list-style-type: none"> • Aging/Older Adult Support Groups • Case.Care Management Community Clinics Dental Care • Early Literacy Development Programs • Family Planning • General Medical Care Interpretation/Translation • Mental Health Care and Counseling • Outreach Programs • Professional Continuing Education • Transportation • WIC • Youth Development
Eligibility:	Residents of Kalihi Valley (census tracts 61-65)
Cost:	Sliding scale based on income
Contact Information:	<p>(808) 791-9400 Main (808) 848-0979 Fax</p> <p>2239 North School Street Kalihi, HI 96819</p> <p>Web: www.kkv.net</p>



Provider Name:	Marimed Foundation
Service Description:	Marimed delivers ocean and land-based learning experiences that empower youth, adults and families and strengthen communities. At the core of each of these programs is our 96' tall-ship, SSV MAKANI OLU, which serves as a platform for learning activities, skills-building, and extraordinary — <i>potentially transformational</i> — experiences.
Services Provided:	<ul style="list-style-type: none"> • Adolescent/Youth Counseling • Inpatient Alcoholism Treatment • Mental Health Halfway Houses • Residential Drug Abuse Treatment
Eligibility:	Adolescent males, 14 through 18, with severe conduct disorder and dually diagnosed with chemical dependency, who face difficult emotional and educational challenges requiring something more structured and restrictive than school or home-based services
Cost:	Free
Contact Information	45-021 Likeke Place Kane'ohe, HI 96744 (808) 235-1377 (808) 239-2475 Email: info@marimed.org Web: www.marimed.org

Provider Name:	Mental Health America of Hawaii
Service Description:	Mental Health America of Hawai'i has fought for 69 years to transform mental illness into mental wellness by creating awareness about mental health/substance abuse, preventing mental illness, reducing the stigma, and improving the care, treatment, and empowerment of those with mental illnesses - children, adults, elders, and their families.
Services Provided:	<ul style="list-style-type: none"> • Youth Suicide and Bullying Prevention • Power up Project • Invisible Children's Project • Brown Bag Mental Health Seminars • Finding Help • Live Your Life Well Presentations • Advocacy
Eligibility:	Not limited
Cost:	Free
Contact Information:	1124 Fort Street Mall, Suite 205 Honolulu, HI 96813 (808) 521-1846 Main (808) 533-6995 Fax Email: info@mentalhealth-hi.org Web: www.mentalhealth-hi.org

Provider Name:	Music for the Heart Autism Foundation
Service Description:	Music support and family support for children and adults with Autism.
Services Provided:	Autism Therapy Individual and Family Support Services for Autism Music Therapy for Autism
Eligibility:	Those affected by Autism
Cost:	Vary depending on services required
Contact Information:	1177 Queen Street #1809 Honolulu, HI 96814 (808) 722-7385 Main (808) 841-1362 Fax Email: michael@musiq4theheart.org Web: www.musiq4theheart.org

Provider Name:	National Alliance on Mental Illness – Hawai'i
Service Description:	Provides support, education, and advocacy for families and consumers whose lives are affected by neuro-biological disorders such as schizophrenia, manic depression and major depression. Advocates for services. Educates through workshops, monthly meetings, books, videos, website, as well as information & referral, and various communications. Volunteer opportunities available in administration, special projects, and committee work.
Services Provided:	Drug Abuse Education/Prevention Library Services Mental Health Care and Counseling Parent Support Groups Psychiatric Resocialization School Health Programs Women's Support Groups
Eligibility:	Not limited
Cost:	Membership dues and free public services.
Contact Information:	770 Kapiolani Blvd., Suite 613 Honolulu, HI 96813 (808) 591-1297 Main (808) 591-2058 Fax Email: info@namihawaii.org Web: www.namihawaii.org

Provider Name:	North Shore Mental Health, Inc.
Service Description:	<p>North Shore Mental Health is an organization of mental and behavioral health providers who primarily live and practice their specialty in the Northern regions of Oahu. We believe that licensed professionals who offer personal knowledge of the unique North Oahu communities, schools, and cultures. Needs of the youth, adults and families of the Northern regions of Oahu will best serve the mental health. We provide school and community based services with local offices available when needed. We have available to our youth, adults and families immediate face-to-face care, if needed twenty-four hours a day, seven days a week. In our care we offer a variety of multi-cultural sensitive child, adult, and family oriented psychotherapeutic and behavioral approaches. We hope to promote physical and mental well-being through counsel and education. We believe that every human being has the potential and right to live a happy, productive, and satisfying life.</p>
Services Provided:	<ul style="list-style-type: none"> • School Based Behavioral Health counseling and therapy through the Department of Education • Intensive Instructional Service Consultants with Qualified Skills Trainers • Early Intervention Consultants for youth from birth to the age of three with Qualified Skills Trainers • Intensive Case Management through the Adult Mental Health Division • Professional and 'Personal Assistance' care through the Department of Human Services (DD/MR) • Community based private office or in home family therapy treatment • Community based psychological and psychiatric evaluations - (AMHD) • Community base medication monitoring when needed - (AMHD) • Outpatient and substance abuse support services through the Department of Health-Alcohol and Drug Abuse Division • Community Based Case Management through the Adult Mental Health Division of the Department of Health. • Professional and “Personal Assistance” care through the Department of Human Services (DD/MR). • Community based private office or in home family therapy treatment. Community based psychological and psychiatric services. • Community based medication monitoring when needed. • Direct support provided to schools, family court proceedings, and Community based activities.
Eligibility:	Not Limited
Cost:	Free
Contact Information:	<p>56-117 Pualalea Street Kahuku, HI 96731</p> <p>(808) 638-8700 Main (808) 638-7919 Fax</p> <p>Email: nsmh@hawaii.rr.com Web: http://www.northshoremmentalhealth.com/</p>

Provider Name:	Parent's & Children Together – Early Head Start
Service Description:	<ul style="list-style-type: none"> • Early Head Start (EHS) is a prenatal- age 3, infant/toddler program for low-income families and children with special needs that is designed to nurture and support parents and children by building on families' strengths. » Home-based services are available » Center-based services offer full day and part day classes in certain areas » Breakfast, lunch, and snack provided » Creative Curriculum » Promote & encourage father participation » Diapers are OK -No need to be potty trained » Prenatal Curriculum for Home Based Services Early Head Start Centers • The Head Start (HS) program provides a “head start” for school success for low-income and special needs children 3-5 years of age. Children learn through play and socialization. » Center based services offer full day and part day classes in certain areas » Breakfast, lunch, and snack provided » Creative Curriculum
Services Provided:	<ul style="list-style-type: none"> • Aloha United Way Agencies • Child Care Providers • Early Childhood Education • Health Education • Health Screening/Diagnostic Services Parent/Child Activity Groups Parenting Education
Eligibility:	<ul style="list-style-type: none"> • Early Head Start-Low income families with children prenatal through three years. • Head Start-Low income families with children age three through five years.
Cost:	Free
Contact Information:	<p>1485 Linapuni Street, Suite 110 Honolulu, HI 96819</p> <p>(808) 842-5996 Main (808) 845-2066 Fax</p> <p>Email: admin@pacthawaii.org Web: www.pacthawaii.org</p>



Provider Name:	Parks & Recreation, Dept. of City of County of Honolulu Therapeutic Recreation Unit
Service Description:	Provides services to promote independent leisure lifestyle for individuals with disabilities. Advocates leisure and recreation services for all levels of ability. Promotes the inclusion of people with disabilities into the regular recreation program rather than specialized programs.
Services Provided:	<ul style="list-style-type: none"> • Camps • Parks/Recreation Areas • Recreational Activities/Sports • Recreational/Leisure/Art Instruction
Eligibility:	Persons with disabilities.
Cost:	Children's programs free.
Contact Information:	<p>1000 Uluohia St., Suite 309 Kapolei, Hawaii 96707</p> <p>(808) 768-3027 V/T Main (808) 768-1917 Fax</p> <p>Email: parks@honolulu.gov Web: www.honolulu.gov/parks.html</p>

Provider Name:	Queens Medical Center - Counseling at Kaheihimali
Service Description:	The Queen's Medical Center provides mental/behavioral health services to the people of Hawai'i by providing a comprehensive continuum of services. In collaboration with family members and community organizations, we facilitate outcome and evidence based treatment for patients in the most appropriate treatment setting. Inpatient and outpatient services are available.
Services Provided:	<ul style="list-style-type: none"> • Assessment services • Group therapy • Interpersonal learning and education • Psychological testing • Neuropsychological testing
Eligibility:	Not limited
Cost:	Vary depending on services provided.
Contact Information:	<p>1374 Nuuanu Avenue Honolulu, Hawaii 96817</p> <p>(808) 547-4401 – Queens Counseling & Clinical Services</p> <p>Web: www.queensmedicalcenter.org/</p>

Provider Name:	Salvation Army – Family Treatment Services
Service Description:	The Salvation Army has the welfare of disadvantaged youths as one of its priorities. Through its youth-focused programs, it helps children and teens through camping opportunities, day care, preschools, as well as special programs for at-risk youth.
Services Provided:	<ul style="list-style-type: none"> • Camp Homelani Provides affordable camp experiences to children each year. Campers enjoy fun in the sun beach activities, crafts, team sports, campfire programs and a variety of educational and wholesome activities. • Preschool Provides quality, affordable day care for preschoolers • Music Programs
Eligibility:	Children 3 - 17 years old.
Cost:	Cost are covered by Departments of Health, and Education.
Contact Information:	<p>Family Services Office 2950 Manoa Rd, Honolulu, HI 96817 (808) 841-5565</p> <p>Camp Homelani 68-243 Oloho St, Waialua, HI 96791 (808) 637-4131</p> <p>Diamond Head Preschool 845 22nd Ave, Honolulu, HI 96816 (808) 739-4931</p>



Provider Name:	Susannah Wesley Community Center
Service Description:	Operates a multi-service center with programs for immigrants, youth, families, senior citizens, and other residents of Kalihi-Palama.
Services Provided:	<ul style="list-style-type: none"> • Aloha United Way • Agencies Case/Care • Management • Crisis Intervention • Dropout Prevention • Drug Abuse Education/Prevention • Food Pantries • Mental Health Care and Counseling • Youth Development • Outreach Programs • English learning classes
Eligibility:	Immigrants, youth/families, elderly
Cost:	Free
Contact Information:	<p>1117 Kaili Street Honolulu, HI 96819</p> <p>(808) 847-1535 Main (808) 847-0787 Fax</p>

Provider Name:	Wai'anae Coast Community Mental Health Center - Behavioral Health
Service Description:	Provides comprehensive outpatient mental health services including screening, referral and follow-up.
Services Provided:	<ul style="list-style-type: none"> • Mental Health Care and Counseling • Mental Health Evaluation • Mental Health Screening
Eligibility:	Not limited
Cost:	Vary depending on services provided.
Contact Information:	<p>Hale Na'au Pono 86-226 Farrington Hwy Waianae, HI 96792</p> <p>(808) 696-4211 Main (808) 696-5516 Fax</p> <p>Web: www.wccmhc.org</p>

Provider Name:	YMCA - Kalihi
Service Description:	Offers dance classes, study hall, camps, sports events or social activities. Sponsors preventive program on youth gang and drug activities.
Services Provided:	<ul style="list-style-type: none"> • Aloha United Way Agencies • Arts and Culture • Camps • Career Exploration • Dance Instruction • Drug Abuse Counseling • Drug Abuse Education/Prevention • Education • Mentoring Programs • Recreational Activities/Sports • Social Clubs/Events • Youth Development
Eligibility:	Minimum age of 10 years.
Cost:	Free
Contact Info:	<p>1335 Kalihi Street Honolulu, HI 96819</p> <p>(808) 848-2494 Main (808) 842-7736 Fax</p> <p>Web: www.ymcahonolulu.org</p>

Provider Name:	YMCA – Kaimuki - Waialae
Service Description:	Provides before and after school care for children. Offers afterschool, summer and holiday child care programs for school aged children. Offers learn-to-swim programs for children through adults. Youth leadership program for teenagers.
Services Provided:	<ul style="list-style-type: none"> • Aloha United Way • Agencies Child Care • Providers Exercise • Classes/Groups Extended • Day Care • Physical Fitness • Swimming/Swimming lessons • Youth Development
Eligibility:	Youth 6-18
Cost:	Vary depending on services
Contact Information:	<p>4835 Kilauea Avenue Honolulu, HI 96816</p> <p>(808) 737-5544 Main</p> <p>Email: info@ymcahonolulu.org</p>

Provider Name:	YMCA -Leeward
Service Description:	Provides after school child care at Barbers Point, Ewa, Holomua, Honowai, Makakilo, Iroquois, Kapolei, Pohakea, Waikele and Waipahu Elementary Schools. Provides before school program at Holomua , Waikele, Kapolei Elementary Schools.
Services Provided:	<ul style="list-style-type: none"> • Aloha United Way Agencies • Arts and Culture • Camps • Child Care Providers • Dance Instruction • Drug Abuse Education/Prevention • Extended Day Care • Gang Programs Leadership Development • Music Instruction • Physical Fitness and • Recreational Activities/Sports • Theater Performances • Youth Development
Eligibility:	Youth K-6 th grade
Cost:	Vary depending on program
Contact Information:	94-440 Mokuola Street Waipahu, HI 96797 (808) 671-6495 Main Email: info@ymcahonolulu.org Web: www.ymcahonolulu.org

Provider Name:	YMCA – Nu’uanu
Service Description:	Provides general youth development, education assistance, career guidance, athletics/sports, and arts & culture.
Services Provided:	<ul style="list-style-type: none"> • Aloha United Way Agencies • Arts and Culture • Career Exploration • Education • Mentoring Programs Mentoring • Athletics/Sports Youth Development
Eligibility:	Youth 6-18
Cost:	Vary depending on services
Contact Information:	1441 Pali Highway Honolulu, HI 96813 (808) 536-3556 Main Email: nuuanuymca@ymcahonolulu.org Web: www.ymcahonolulu.org

Provider Name:	YMCA of Honolulu Central Branch
Service Description:	Refer to Services provided
Services Provided:	<ul style="list-style-type: none"> • Camps • Judo • Recreational Activities/Sports • Recreational/Leisure/Arts Instruction • Swimming/Swimming Lessons • Youth Development
Eligibility:	Not limited
Cost:	Vary depending on services provided
Contact Information:	<p>401 Atkinson Drive Honolulu, HI 96814</p> <p>(808) 941-3344 Main</p> <p>Email: info@ymcahonolulu.org Web: ymcahonolulu.org</p>

Provider Name:	YMCA – West O’ahu/Mililani
Service Description:	Conducts swim lessons, gymnastics, ballet and sports for preschool to middle school youths. Conducts teen leadership program. Offers morning preschool programs, before and after school programs for elementary age, afterschool for middle school kids, and family activities.
Services Provided:	<ul style="list-style-type: none"> • Arts and Culture • Career Exploration • Child Care Providers • Dance Instruction • Early Childhood Education • Education • Extended Day Care Leadership • Development Mentoring Programs • Mentoring, Athletics/Sports Physical • Fitness Swimming/Swimming Lessons • Youth Development
Eligibility:	Not limited
Cost:	Vary depending on services provided. Financial assistance available.
Contact Information:	<p>95-1190 Hikikaulia Street Mililani, HI 96789</p> <p>(808) 625-1040 Main (808) 625-1327 Fax</p> <p>Email: info@ymcahonolulu.org Web: www.ymcahonolulu.org</p>

Provider Name:	YMCA - Windward
Service Description:	Provides morning and after school child care. Offers water adjustment class for children, aged six months to 12 years, (includes familiarization with water to defuse fears). Conducts fitness programs with work-out room, aerobics, summer fun program and water aerobics for adults.
Services Provided:	<ul style="list-style-type: none"> • Camps • Aloha United Way Agencies • Arts and Culture • Career Exploration • Child Care Providers • Extended Day Care Karate • Mentoring Programs • Physical Fitness • Recreational Activities/Sports • Swimming/Swimming Lessons • Youth Development
Eligibility:	Youth 6 -18
Cost:	Vary depending on services provided.
Contact Information:	<p>1200 Kailua Road Kailua, HI 96734</p> <p>(808) 261-0808 Main (808) 261-2365 Fax</p> <p>Email: info@ymcahonolulu.org Fax: www.ymcahonolulu.org</p>



Kaua'i

Provider Name:	Hale'opio Kaua'i, Inc.
Service Description:	Hale 'Opio Kaua'i, Inc. is a nonprofit organization serving youth and families on Kaua'i since 1975. Hale 'Opio is committed to youth-directed, family-centered, culturally sensitive programs that address the physical, emotional, educational, recreational and developmental needs of those in our care.
Services Provided:	<p>First Jobs Academy Brochure Kaua'i Teen Court 2011 Calendar Juvenile Diversion Program Teen Dating Violence Prevention Preventing Underage Drinking Hawai'i Foster Youth Coalition – Kaua'i Chapter Ke Kahua O Ka Malamalama Residential Services Therapeutic Foster Homes s(Cool) Connections Program Emergency Shelter Services Kaua'i Teen Court Street Smart Making Proud Choices Crisis Stabilization Services Independent Living Program Victim Impact Classes Kaua'i Youth Resource Hui Family Conferencing</p>
Eligibility:	Not limited
Cost:	Free
Contact Info:	<p>Hale 'Opio Kaua'i, Inc. 2959 Umi Street Lihu'e, Kaua'i, Hawai'i 96766 (808) 245-2873 Main (808) 245-6957 Fax Web: www.haleopio.org</p>

Provider Name:	Hina Mauka – Teen Care Kaua'i High School
Service Description:	Offers school-based adolescent outpatient treatment at various high schools and middle schools (Chiefess Kamakehelei Middle School, Kauai High School, Kapa'a Middle School, Kapa'a High School, Waimea Canyon Intermediate School, Waimea High School).

Services Provided:	Alcohol Abuse Education/Prevention Drug Abuse Education/Prevention Family Counseling Individual Counseling Substance Abuse Services Substance Abuse Treatment Programs
Eligibility:	Substance abusers or dually diagnosed. Family Education & Counseling Program is open to family and friends of people addicted to alcohol and other drugs (even if the addicted people aren't in treatment).
Cost:	Vary depending on services provided
Contact Info:	3577 Lala Road Lihue, HI 96766 (808) 273-3173 ext. 241 Main Email: admin@hinamauka.org Web: www.hinamauka.org

Provider Name:	Ke Ala Pono Recovery Center (McKenna Recovery Center)
Service Description:	Provides drug and alcohol treatment and assessments. Offers education, group therapy, and family night. Provides outpatient, detox for drug abuse, drug dependence program, treatment for relapse, crisis intervention, eating disorder, depression and other mental health issues. Also provides adolescent and adult programs.
Services Provided:	Alcohol Abuse Education/Prevention Alcoholism Day Treatment Drug Abuse Education/Prevention Drug Detoxification DUI Offender Programs Eating Disorders Treatment Outpatient Drug Detoxification
Eligibility:	Must have insurance authorization or ability to pay.
Cost:	Vary depending on services provided.
Contact Info:	4374 Kukui Grove, Ste. 104 Lihue, HI 96766 (808) 246-0663 Main (808) 246-1806 Fax Email: kauai@mckennarecoverycenter.com Web: http://www.mckennarecoverycenter.com/

Provider Name:	YMCA of Kaua'i
Service Description:	Provides activities and programs for youth including camping, roller hockey, fitness programs, outdoor education, swimming, and a Teen Center.

Services Provided:	Physical Fitness Recreational Activities/Sports
Eligibility:	Depends on activity selected
Cost:	Vary depending on services provided
Contact Info:	PO Box 1786 Lihue, HI 96766 (808) 246-9090 Main (808) 246-4411 Fax Email: info@ymcahonolulu.org Web: http://www.ymcaofkauai.org/YMCA/



Maui

Provider Name:	Aloha House Inc. Addiction & Mental health Treatment
Service Description:	Offers outpatient services for children and adolescents with mental health diagnosis. Includes psychological assessment, psychiatric evaluation, medication monitoring, case management, intensive in-school services, family and individual psychotherapy services.
Services Provided:	Adolescent/Youth Counseling Case/Care Management Family Counseling Mental Health Care and Counseling Mental Health Evaluation Psychological Testing
Eligibility:	Referral through state agency.
Cost:	As prescribed in the contract between Aloha House and Department of Health.
Contact Info:	200 Ike Drive Makawao, HI 96768 (808) 579-8184 Main (808) 579-8426 Fax Email: alohahouse@aol.com Web: http://www.aloha-house.org/

Provider Name:	West Maui Counseling Center
Service Description:	Comprehensive, quality mental health care for individuals, couples, and families for a wide range of mental health concern such as depression, anxiety, recovery from trauma/abuse, posttraumatic stress disorder, severe mental illness, relationship concerns, stress management, critical incidents and workplace trauma, personal growth, postpartum issues, life transitions, grief and loss, chronic disease management/medical issues, school and behavioral problems, addiction, ADHD, LGBT concerns, spirituality and faith, family problems, and low self-esteem.
Services Provided:	Individual therapy, couple therapy, couple co-therapy, family therapy, behavioral medicine/chronic disease management, nutritional assessment and counseling, psychological evaluations, and crisis interventions/debriefing.
Eligibility:	Adult, children, and adolescent.
Cost:	Vary depending on services provided.
Contact Info:	727 Wainee Street #201 Lahaina, HI 96761 (808) 280-4192 Main (877) 273-2946 Fax Email: info@westmauicounselingcenter.com Web: http://www.westmauicounseling.com/

Provider Name:	Health, Dept. of – Maui Family Guidance Center
Service Description:	Operates a joint program between the Department of Health and the Department of Education which services special education students between the ages of 12 to 20. Provides individual, group, family and recreational therapy to youth and their families and a parent support group. Provides individual academic assistance.
Services Provided:	Mental Health Care and Counseling
Eligibility:	Special education students (emotionally disturbed and learning disabled) ages 12 to 20.
Cost:	Free
Contact Info:	PO Box 257 Pu'unene, HI 96784 (808) 877-7341 Main (808) 877-7344 Fax Email: webmain@mail.health.state.hi.us

Provider Name:	Health, Dept. of – Maui Child & Mental Health
Service Description:	Provides care coordination and contracts out to Department of Health awarded private providers, community-based, child-focused and family-centered comprehensive behavioral health care. Serves children, adolescents and their families who may suffer from a variety of emotional, behavioral or social adjustment problems. Provides evaluation, treatment planning, direct treatment and case management through contract providers. Provides consultation to Department of Education personnel and private agencies.
Services Provided:	Adolescent/Youth Counseling Family Counseling Group Counseling Individual Counseling Mental Health Evaluation Psychiatric Case Management
Eligibility:	Children and adolescents up to age 18 (up to age 20 if in special education classes in school) who are in need of mental health services. Families with insurance or sufficient financial resources will be encouraged to use private providers.
Cost:	Vary depending on services provided
Contact Info:	270 Wailuku Beach Road #213 Wailuku, HI 96793 (808) 243-1254 Main Email: webmain@mail.health.state.hi.us Web: http://health.hawaii.gov/camhd/home/family-guidance-centers/maui

Provider Name:	Maui Youth & Family Services, Inc.
Service Description:	Maui Youth and Family Services was established in 1978 by the County of Maui as the Maunaolu Youth Residential Shelter and incorporated as a private non-profit agency in 1982. MYFS' mission is to "build better lives with Hawaii's families" by providing a range of behavioral and mental health programs that work together to wrap appropriate services around children and families. By providing services that emphasize prevention, MYFS focuses on developing stronger families and youth who become responsible and contributing members of the community
Services Provided:	Outreach and Advocacy Emergency Shelter Therapeutic Foster Home Tobacco, Alcohol, Drug, Pregnancy Prevention Program Intensive Outpatient Substance Abuse Treatment
Eligibility:	All of our programs target youth who find themselves in situations beyond their control. That's where we step in. By providing the right program on an individual basis, we ensure that these young people do not slip through the cracks.
Cost:	Free
Contact Info:	Maui Youth & Family Services, Inc. (MYFS) PO Box 790006 Paia, HI 96779-0006 (808)579-8414 Main (808) 579-8426 Fax Email: info@myfs.org Web: http://www.myfs.org/

Provider Name:	YMCA, Maui Family
Service Description:	Provides general youth development, education assistance, career guidance, athletics/sports, and arts & culture.
Services Provided:	Arts and Culture Career Exploration Education Mentoring Programs Mentoring, Athletics/Sports Youth Development
Eligibility:	Youth 6-18
Cost:	Vary depending on services provided. Scholarship available.
Contact Info:	250 Kanaloa Avenue Kahului, HI 96732 (808) 242-9007 Main (808) 244-6713 Fax Email: mauiYMCA@mauiymca.org Web: www.mauiymca.org

Big Island

Provider Name:	Hawaii Behavioral Health - Hilo
Service Description:	Provides training and preparation for licensure for foster and adoptive parents. Provides child, adolescent, family, individual, and group therapy. Also provides services to autistic children, psychological evaluations, therapeutic foster care program, and after school and summer day programs and a skills trainer program.
Services Provided:	Adolescent/Youth Counseling Family Counseling Individual Counseling Organizational Training Services for Foster Parents and Adoptive Parents
Eligibility:	Mental Health/Education Services: children, youth, and families.
Cost:	Services paid for by state
Contact Info:	234 Waiuanue Ave., Ste. 215 Hilo, HI 96720 (808) 935-7949 Main (808) 935-5996 Fax Web: www.hibh.org

Provider Name:	Institute for Family Enrichment - Hilo
Service Description:	Provides case management and home-based therapy to families referred by social service agencies. Offers cross-cultural awareness workshops. Provides clinical services, parenting and child care classes, and anger management groups.
Services Provided:	Adolescent/Youth Counseling Anger Management Child Abuse Counseling Child Abuse Prevention
Eligibility:	Intensive home based services must be referred by social service agency. Not limited for other services.
Cost:	Free for home-based program. Other clinical services, group and workshop fees will vary.
Contact Info:	1045A Kilauea Ave. Hilo, HI 96720 (808) 935-2188 Main (808) 961-2073 Fax Email: jbergbauer@tiffe.org Web: www.tiffe.org

Provider Name:	McKenna Recovery Center
Service Description:	Provides drug and alcohol treatment and assessments. Offers education, group therapy, and family night. Provides outpatient, detox for drug abuse, drug dependence program, treatment for relapse, crisis intervention, eating disorder, depression and other mental health issues. Also provides adolescent and adult programs.
Services Provided:	Alcohol Abuse Education/Prevention Alcoholism Day Treatment Drug Abuse Education/Prevention Drug Detoxification DUI Offender Programs Eating Disorders Treatment Outpatient Drug Detoxification
Eligibility:	Must have insurance authorization or ability to pay.
Cost:	Vary depending on services provided.
Contact Info:	140 Puueo Street Hilo, HI 96720 (808) 969-7577 Main (808) 934-0497 Fax Web: www.mckennarecoverycenter.com

Provider Name:	YMCA – The Island of Hawai’i
Service Description:	Provides year-round child care programs for preschool, school age and teens in Hilo & Kona; health & fitness for teens, college, adults and seniors in Hilo; Family Visitation Center in Hilo. Volunteer & employment opportunities in Hilo and Kona. Manage Aquatic Center in Kawaihae Harbor and Minuke Ole Park next to Town Hall in Waimea.
Services Provided:	Child Care Provider Recruitment Child Care Provider Referrals Child Care Providers Child Custody/Visitation Assistance CPR Instruction First Aid Instruction Mass Case Shelters Mentoring Programs Recreational Activities/Sports Volunteer Opportunities Youth Development
Eligibility:	Not limited
Cost:	Vary based on services
Contact Info:	300 W. Lanikaula Street Hilo, HI 96720 (808) 935-3721 Main Web: http://www.ymca.net/

Provider Name:	YMCA - Waiakea Settlement
Service Description:	Offers pre-school care for ages 2-5 years, must be toilet trained. Offers after school child care for ages 5-12. Offers summer child care, Kids Express Funhouse, lessons in Japanese language, hula for pre-school and elementary ages. Provides room rentals for meetings and parties. Offers holiday day care, ages 5-13. Provides leadership development for teens, youth sports ages 5-13, volleyball, wrestling, skate park, martial arts, Information Education classes, aerobics, yoga classes, New Fitness Center.
	Offers parenting classes.
Services Provided:	Camps Child Care Providers Early Childhood Education Extended Day Care Leadership Development Mediation Meeting Space Parenting Education Preschool Youth Development
Eligibility:	Youth 6-18
Cost:	Vary depending on services provided
Contact Info:	300 W Lanikaula Street Hilo, HI 96720 (808) 935-3721 Main (808) 969-1772 Fax Email: ymcahilo@aloha.net

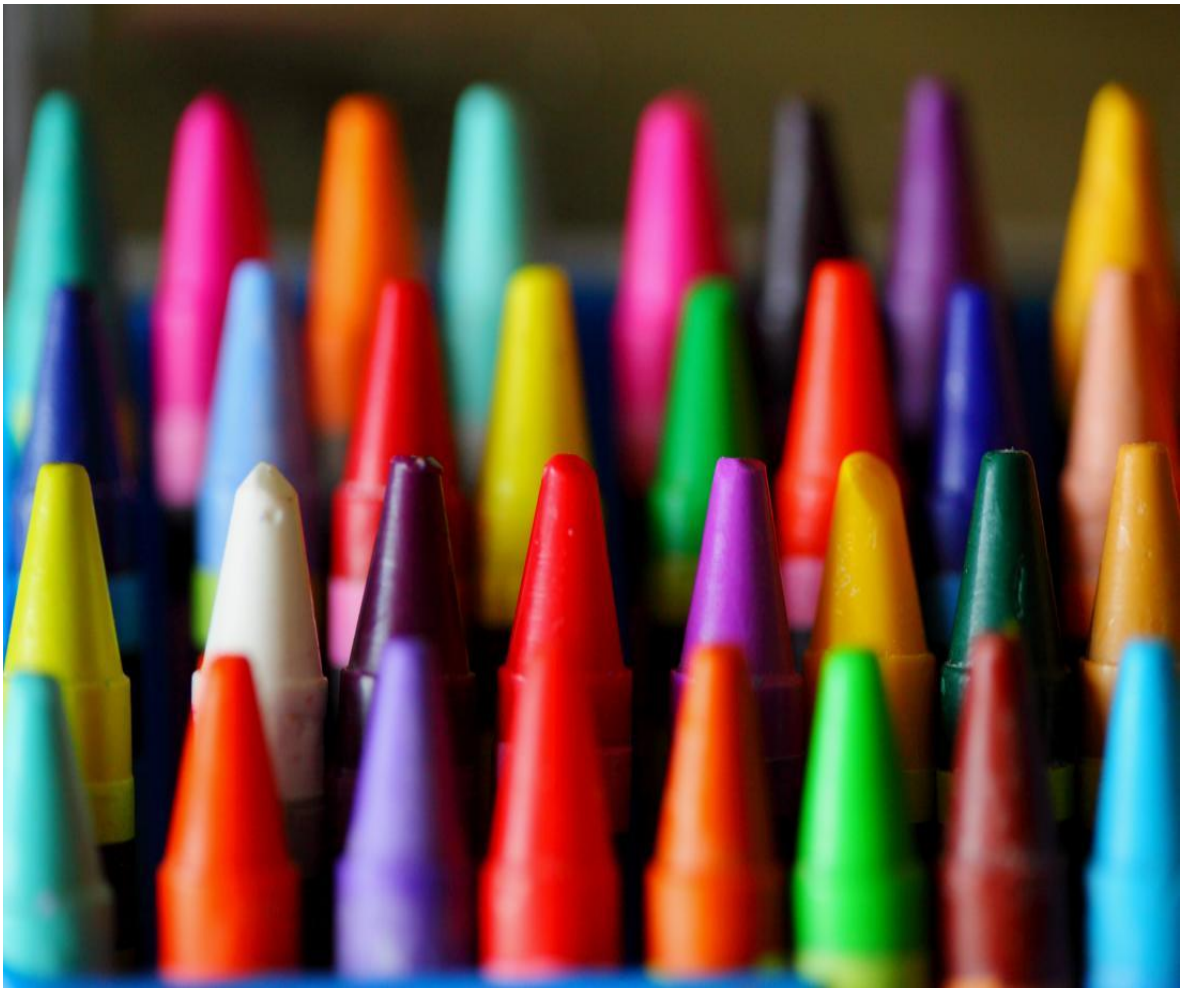


Lana'i

Provider Name:	Health, Dept. of – Maui Family Guidance Ctr. –
Service Description:	Provides care coordination and contracts out to DOH awarded private providers, community-based, child-focused and family-centered comprehensive behavioral health care. Serves children, adolescents and their families who may suffer from a variety of emotional, behavioral or social adjustment problems. Provides evaluation, treatment planning, direct treatment and case management through contract providers. Provides consultation to Dept. of Education personnel and private agencies.
Services Provided:	Adolescent/Youth Counseling Family Counseling Group Counseling Individual Counseling Mental Health Evaluation Psychiatric Case Management
Eligibility:	Special education students (emotionally disturbed and learning disabled) ages 4 - 20.
Cost:	Free
Contact Info:	911 Fraser Avenue Lanai City, HI 96763 (808) 565-7915 Main (808) 565-7904 Fax Email: webmail@mail.health.state.hi.us Web: http://health.hawaii.gov/

Provider Name:	Lana'i Youth Center
Service Description:	We provide a fun, safe place for youth to gather. A variety of youth activities offered to youth ages 8 to 18.
Services Provided:	Archery Arts & Crafts Instruction Baseball Computers Cooking Classes Drug Abuse Education/Prevention Golf Hiking Homework Help Programs Recreation Centers Recreational Activities/Sports Sewing Instruction Sexuality/Reproduction Health Education Soccer

	Softball Swimming/Swimming Lessons Table Tennis
Eligibility:	Youth, 8-18 years old.
Cost:	Free
Contact Info:	717 Fraser Avenue Lanai City, HI 96763 (808) 565-7675 Main (808) 565-9588 Fax Email: lanaiyouthcenter@wave.hicv.net



Moloka'i

Provider Name:	Health, Dept. of – Maui Family Guidance Ctr.-
Service Description:	Provides care coordination and contracts out to/DOH awarded private providers, community-based, child-focused and family centered comprehensive behavioral health care. Serves children, adolescents and their families who may suffer from a variety of emotional, behavioral or social adjustment problems. Provides evaluation, treatment planning, direct treatment and case management through contract providers. Provides consultation to Dept. of Education personnel and private agencies. Application Process through the Phone only
Services Provided:	Adolescent/Youth Counseling Family Counseling Group Counseling Individual Counseling Mental Health Evaluation Psychiatric Case Management
Eligibility:	Special education students (emotionally disturbed and learning disabled) ages 4 - 20.
Cost:	Free
Contact Info:	65 Makaena Pl. Suite 107 Kaunakakai, HI 96748 (808) 243-1251 Main (808) 553-9859 Fax Email: webmail@mail.health.state.hi.us Web: http://health.hawaii.gov/



Helping Children by Supporting Parents & Strengthening Families

Helpful Hotlines

ACCESS Suicide Prevention/Crisis Line – 1-800-832-3100

Intervention – 24 Hour Hotline

The Parent Line – 1-800-816-1222

O'ahu

Provider Name:	Easter Seals Hawai'i Main Branch
Service Description:	Our mission is to provide exceptional, individualized, family-centered services to empower people with disabilities or special needs to achieve their goals and live independent, fulfilling lives.
Services Provided:	Developmental Assessment Information and Referral Occupational Therapy Parent Support Groups Physical Therapy Special Education Speech/Language Pathology Volunteer Recruitment/Placement
Eligibility:	Children and adults with disabilities.
Cost:	Vary depending on services provided.
Contact Info:	710 Green Street Honolulu , HI 96813 (808) 536-1015 Main Email: info@eastersealshawaii.org Web: http://www.easterseals.com/hawaii/



Provider Name:	Easter Seals Hawai'i – Kapolei Early Intervention
Service Description:	Early Intervention services providing comprehensive coordinated services including peripheral, occupational, special education, care coordination, and speech therapy.
Services Provided:	Developmental Assessment Information and Referral Occupational Therapy Parent Support Groups Physical Therapy Special Education Speech/Language Pathology Volunteer Recruitment/Placement
Eligibility:	Children and adults with disabilities.
Cost:	Vary depending on service provided.
Contact Info:	92-461 Makakilo Dr. Kapolei, HI 96707 (808) 678-3814 Main (808) 678-3820 Fax Email: info@eastersealshawaii.org Web: www.eastersealshawaii.org



Provider Name:	Hawaii Behavioral Health
Service Description:	Hawaii Behavioral Health (HBH) is a leading regional resource for high quality community-based educational, social and behavioral health services for children, adolescents, and families throughout the state of Hawaii. Our service continuum has included psychological assessments, outpatient (individual and family therapy) services, intensive home-based
	services, adolescent day treatment, therapeutic foster care, case management/care coordination, therapeutic aide and biopsychosocial rehabilitative services, services to youth and families with autistic spectrum disorder, and foster/adoptive parent training, certification and approval. HBH's program philosophy of care seeks to empower clients through a provision of services that are individualized, child and family-centered, strengths-based, and flexible to changing needs with an emphasis on self-sufficiency.
Services Provided:	Professional Intensive Instructional Service Consultation (IISC); Skills Training; and Identified and referred by Hawaii Department of Education under IDEIA. Individual and group counseling; Parent counseling and training ; School consultation for students with behavioral disorders; and Identified and referred by Hawaii Department of Education under IDEIA. Behavioral Treatment Plans Training and assistance to families For infants and toddlers with serious behavior concerns (autism/PDD) under the age of three referred by the Department of Health, Early Intervention Program
Eligibility:	Mental Health/Education Services: children, youth, and families.
Cost:	Services paid for by the state
Contact Info:	210 Ward Ave., Suite 219B Honolulu, HI 96814 (808) 585-1424 Main (808) 585-0379 Fax Email: oahu@hibh.org Web: www.hibh.org



Provider Name:	Hawai'i Counseling & Education Center Inc
Service Description:	Provides individual, family and couples counseling for children, adolescents and adults. Offers outpatient substance abuse counseling and substance abuse assessments. Also provides domestic violence and anger management classes for adults and adolescents. Offers parenting classes, stress management classes, coaching, professional training and seminars on healthy living.
Services Provided:	Adolescent/Youth Counseling Alcoholism Day Treatment Anger Management Family Counseling Group Counseling Individual Counseling Marriage Counseling Mental Health Care and Counseling Outpatient Drug Detoxification
	Parenting Education Sexual Assault Treatment Spouse/Domestic Partner Abuse Counseling Stress Management
Eligibility:	Not limited
Cost:	Varies, depending on services provided.
Contact Info:	970 N. Kalaheo Ave, Ste. C-201 Kailua, HI 96734 (808) 254-6484 Main (877) 831-4232 Fax Email: <i>info@hcechawaii.com</i> Web:www.hcechawaii.com

Provider Name:	Hawaii Families as Allies
Service Description:	Maintains a statewide network of local support groups made up of parents/caregivers whose children have emotional, mental or behavioral challenges. Offers parent to parent support, telephone support, quarterly newsletter, resource library, parent advocacy training, conference, legislative networking, and information and referral.
Services Provided:	Mental Health Related Support Groups Parent Support Groups
Eligibility:	Parents/caregivers of children with emotional or behavioral challenges.
Cost:	Free
Contact Info:	99-209 Moanalua Rd., Ste. 305 Aiea, HI 96701 (808) 487-8785 Main (808) 674-7080 Email: hfaa@hfaa.net Web: www.hfaa.net (Site Currently Undergoing changes 8/9/15)

Provider Name:	Institute for Family Enrichment
Service Description:	Offers home-based or office-based therapy and counseling for individuals, couples, groups, and families specializing in sex abuse, marital, personal growth, family, play therapy, relationship, spiritual and religious counseling, parenting skills.
Services Provided:	Family Counseling Group Counseling Individual Counseling Marriage Counseling
Eligibility:	Not limited
Cost:	\$75 - \$100 per session
Contact Info:	91-1841 Fort Weaver Road Ewa Beach, HI 96706 (808)596-8433 Main (808)748-3080 Fax

Provider Name:	Kokua Kalihi Valley Comprehensive Family Services
Service Description:	Kokua Kalihi Valley (KKV) is a community organization with the mission for "healing and reconciliation in the Kalihi Valley community". KKV serves residents in Kalihi Valley (census tracts 61-65), a Medically Underserved Area and Health Personnel Shortage Area, as designated by the Public Health Service. Services include: dental, medical, family planning, WIC nutrition, behavioral health, elderly services, youth development, case management, transportation, translation, outreach, professional education and literacy for young children. (Closed Sunday)
Services Provided:	Aging/Older Adult Support Groups Case.Care Management Community Clinics Dental Care Early Literacy Development Programs Family Planning General Medical Care Interpretation/Translation Mental Health Care and Counseling Outreach Programs Professional Continuing Education Transportation WIC Youth Development
Eligibility:	Residents of Kalihi Valley (census tracts 61-65)
Cost:	Sliding scale based on income
Contact Info:	2239 North School Street Kalihi, HI 96819 (808) 791-9400 Main (808) 848-0979 Fax Web: www.kkv.net



Provider Name:	Learning Disabilities Association of Hawai'i
Service Description:	To serve the families of children with disabilities by providing educational advocacy, training, support and other programs in order to remove barriers and promote awareness and full opportunity.
Services Provided:	Aloha United Way Agencies Disability Rights Group Health Education for Learning Disabilities
	Individual Advocacy
Eligibility:	Not limited
Cost:	Free (Some exceptions)
Contact Info:	245 N. Kukui Street, Suite 205 Honolulu, HI 96817 (808) 536-9684 Main (800) 533-9684 Toll Free Neighbor Islands (808) 537-6780 Fax Email: MMoore@LDAHawaii.org Web: www.ldahawaii.org

Provider Name:	National Alliance on Mental Illness – Hawai'i
Service Description:	Provides support, education, and advocacy for families and consumers whose lives are affected by neuro-biological disorders such as schizophrenia, manic depression and major depression. Advocates for services. Educates through workshops, monthly meetings, books, videos, website, as well as information & referral, and various communications. Volunteer opportunities available in administration, special projects, and committee work.
Services Provided:	Drug Abuse Education/Prevention Library Services Mental Health Care and Counseling Parent Support Groups Psychiatric Resocialization School Health Programs Women's Support Groups
Eligibility:	Not limited
Cost:	Membership dues and free public services.
Contact Info:	770 Kapiolani Blvd., Suite 613 Honolulu, HI 96813 (808) 591-1297 Main (808) 591-2058 Fax Email: info@namihawaii.org Web: www.namihawaii.org

Provider Name:	Parent's & Children Together – Early Head Start
Service Description:	<p>Early Head Start and Head Start Programs, federally funded initiatives, provide early childhood education and related comprehensive services for low-income parents and children and children with special needs. Early Head Start provides services in centers and in homes to prenatal parents and parents with infants and toddlers; parents participate in classrooms and parenting and adult education classes at Kuhio Park Terrace, and in Honolulu, Windward and West Oahu. Head Start serves children ages three through five and their parents to provide a head start for school success. The Kalihi-based program offers early education classes, parent involvement, and health and social services. EARLY HEAD START Early Head Start (EHS) is a prenatal- age 3, infant/toddler program for low income families and children with special needs that is designed to nurture and support parents and children by building on families' strengths. » Home-based services are available » Center-based services offer full day and part day classes in certain areas » Breakfast, lunch, and snack provided » Creative Curriculum » Promote & encourage father participation » Diapers are OK -No need to be potty trained » Prenatal Curriculum for Home Based Services Early Head Start Centers Waianae Ma'ili Kuhio Park Terrace Punalu'u Wahiawa Helemano Pearl City Waimanalo Home-Based Services Honolulu, Leeward, Central, Koolauloa, Koolaupoko, and North Shore HEAD START The Head Start (HS) program provides a "head start" for school success for low-income and special needs children 3-5 years of age. Children learn through play and socialization. » Center based services offer full day and part day classes in certain areas » Breakfast, lunch, and snack provided » » Promote & encourage father participation » Home visits » Inclusion classrooms with the Department of Education for special needs children Head Start Centers - Kalihi, Oahu Kuhio Park Terrace Kalihi-Waena Elementary Fern Elementary Kalihi Elementary Head Start Centers - Island of Hawaii Hilo Child Development Center Puueo Community Center Kalaniana'ole Elementary Kapiolani Elementary Mt. View Elementary Pahoia Elementary Keaau Elementary Hawaiian Beaches Keonepoko Elementary Kahakai Elementary Kealakehe Elementary Keauhou In collaboration with the Early Intervention Section and the Department of Education, Early Head Start/ Head Start (EHS/HS) provides services to children with special needs and their families; providing an ideal environment to promote the development of new skills, and support families through the transition process</p>

Services Provided:	<p>Aloha United Way Agencies Child Care Providers Early Childhood Education Health Education Health Screening/Diagnostic Services Parent/Child Activity Groups Parenting Education</p>
--------------------	--

Cost:	Free
Contact Info:	1485 Linapuni Street, Suite 110 Honolulu, HI 96819 (808) 842-5996 Main (808) 845-2066 Fax Email: admin@pacthawaii.org Web: www.pacthawaii.org



Kaua'i

Provider Name:	Hale'opio Kaua'I, Inc.
Service Description:	Hale `Opio Kaua`i, Inc. is a nonprofit organization serving youth and families on Kaua`i since 1975. Hale `Opio is committed to youth-directed, family-centered, culturally sensitive programs that address the physical, emotional, educational, recreational and developmental needs of those in our care.
Services Provided:	<p>First Jobs Academy Brochure Kaua'i Teen Court 2011 Calendar Juvenile Diversion Program Teen Dating Violence Prevention Preventing Underage Drinking Hawai'i Foster Youth Coalition – Kaua'i Chapter Ke Kahua O Ka Malamalama Residential Services Therapeutic Foster Homes s(Cool) Connections Program Emergency Shelter Services Kaua`i Teen Court Street Smart Making Proud Choices Crisis Stabilization Services Independent Living Program Victim Impact Classes</p>
	<p>Kaua`i Youth Resource Hui Family Conferencing</p>
Eligibility:	Not limited
Cost:	Free
Contact Info:	<p>Hale `Opio Kaua`i, Inc. 2959 Umi Street Lihu'e, Kaua`i, Hawai`i 96766 (808) 245-2873 Main (808) 245-6957 Fax Web: www.haleopio.org</p>



Provider Name:	Hina Mauka – Teen Care Kaua’i High School
Service Description:	Offers school-based adolescent outpatient treatment at various high schools and middle schools (Chiefess Kamakehelei Middle School, Kauai High School, Kapa'a Middle School, Kapa'a High School, Waimea Canyon Intermediate School, Waimea High School).
Services Provided:	Alcohol Abuse Education/Prevention Drug Abuse Education/Prevention Family Counseling Individual Counseling Substance Abuse Services Substance Abuse Treatment Programs
Eligibility:	Substance abusers or dually diagnosed. Family Education & Counseling Program is open to family and friends of people addicted to alcohol and other drugs (even if the addicted people aren't in treatment).
Cost:	Vary depending on services provided
Contact Info:	3577 Lala Road Lihue, HI 96766 (808) 645-1496 Main Email: admin@hinamauka.org Web: www.hinamauka.org

Maui

Provider Name:	Aloha House Inc Children & Adolescent Outpatient
Service Description:	Offers outpatient services for children and adolescents with mental health diagnosis. Includes psychological assessment, psychiatric evaluation, medication monitoring, case management, intensive in-school services, family and individual psychotherapy services.
Services Provided:	Adolescent/Youth Counseling Case/Care Management Family Counseling
	Mental Health Care and Counseling Mental Health Evaluation Psychological Testing
Eligibility:	Referral through state agency.
Cost:	As prescribed in the contract between Aloha House and Department of Health.
Contact Info:	200 Ike Drive Makawao, HI 96768 (808) 579-8414 Main (808) 579-8426 4Fax Email: alohahouse@aol.com Web: http://www.aloha-house.org/

Provider Name:	Health, Dept. of – Maui Family Guidance Center
Service Description:	Operates a joint program between the Department of Health and the Department of Education which services special education students between the ages of 12 to 20. Provides individual, group, family and recreational therapy to youth and their families and a parent support group. Provides individual academic assistance.
Services Provided:	Mental Health Care and Counseling
Eligibility:	Special education students (emotionally disturbed and learning disabled) ages 12 to 20.
Cost:	Free
Contact Info:	1830 Honoapiilani Highway Lahaina, Hawaii 96761 (808)662-404521 Main (808)243-1254Fax Web: http://health.hawaii.gov/

Provider Name:	Health, Dept. of – Maui Child & Adoles. Mental
Service Description:	Provides care coordination and contracts out to Department of Health awarded private providers, community-based, child-focused and family-centered comprehensive behavioral health care. Serves children, adolescents and their families who may suffer from a variety of emotional, behavioral or social adjustment problems. Provides evaluation, treatment planning, direct treatment and case management through contract providers. Provides consultation to Department of Education personnel and private agencies.
Services Provided:	Adolescent/Youth Counseling Family Counseling Group Counseling Individual Counseling
	Mental Health Evaluation Psychiatric Case Management
Eligibility:	Children and adolescents up to age 18 (up to age 20 if in special education classes in school) who are in need of mental health services. Families with insurance or sufficient financial resources will be encouraged to use private providers.
Cost:	Vary depending on services provided
Contact Info:	Maui Family Guidance Center 270 Waiehu Beach Rd Wailuku, Hawaii 96793 (808) 243-1252 Main Email: webmain@mail.health.state.hi.us

Big Island

Provider Name:	Hawaii Behavioral Health - Hilo
Service Description:	Provides training and preparation for licensure for foster and adoptive parents. Provides child, adolescent, family, individual, and group therapy. Also provides services to autistic children, psychological evaluations, therapeutic foster care program, and after school and summer day programs and a skills trainer program.
Services Provided:	Adolescent/Youth Counseling Family Counseling Individual Counseling Organizational Training Services for Foster Parents and Adoptive Parents
Eligibility:	Mental Health/Education Services: children, youth, and families.
Cost:	Services paid for by state
Contact Info:	234 Waiuanue Ave., Ste. 215 Hilo, HI 96720 (808) 935-7949 Main (808) 935-5996 Fax Web: www.hibh.org

Provider Name:	Institute for Family Enrichment - Hilo
Service Description:	Provides case management and home-based therapy to families referred by social service agencies. Offers cross-cultural awareness workshops. Provides clinical services, parenting and child care classes, and anger management groups.
Services Provided:	Adolescent/Youth Counseling Anger Management Child Abuse Counseling Child Abuse Prevention Family Counseling
Eligibility:	Intensive home based services must be referred by social service agency. Not limited for other services.
Cost:	Free for home-based program. Other clinical services, group and workshop fees will vary.
Contact Info:	77 Mohouil Street Hilo, HI 96720 (808) 961-5166 Main (808) 934-0071 Fax Email: jbergbauer@tiffe.org Web: www.tiffe.org

Provider Name:	YMCA - Waiakea Settlement
Service Description:	Offers pre-school care for ages 2-5 years, must be toilet trained. Offers after school child care for ages 5-12. Offers summer child care, Kids Express Funhouse, lessons in Japanese language, hula for pre-school and elementary ages. Provides room rentals for meetings and parties. Offers holiday day care, ages 5-13. Provides leadership development for teens, youth sports ages 5-13, volleyball, wrestling, skate park, martial arts, Information Education classes, aerobics, yoga classes, New Fitness Center. Offers parenting classes.
Services Provided:	Camps Child Care Providers Early Childhood Education Extended Day Care Leadership Development Mediation Meeting Space Parenting Education Preschool Youth Development
Eligibility:	Youth 6-18
Cost:	Vary depending on services provided
Contact Info:	300 W Lanikaula Street Hilo, HI 96720 (808) 935-3721 Main (808) 969-1772 Fax Email: ymcahilo@aloha.net



Lana'i

Provider Name:	Health, Dept. of – Maui Family Guidance Ctr. –
Service Description:	Provides care coordination and contracts out to DOH awarded private providers, community-based, child-focused and family-centered comprehensive behavioral health care. Serves children, adolescents and their families who may suffer from a variety of emotional, behavioral or social adjustment problems. Provides evaluation, treatment planning, direct treatment and case management through contract providers. Provides consultation to Dept. of Education personnel and private agencies.
Services Provided:	Adolescent/Youth Counseling Family Counseling Group Counseling Individual Counseling Mental Health Evaluation Psychiatric Case Management
Eligibility:	Special education students (emotionally disturbed and learning disabled) ages 4 - 20.
Cost:	Free
Contact Info:	911 Fraser Avenue Lanai City, HI 96763 (808) 565-7915 Main (808) 565-7904 Fax Email: webmail@mail.health.state.hi.us



Moloka'i

Provider Name:	Health, Dept. of – Maui Family Guidance Ctr.-
Service Description:	Provides care coordination and contracts out to/DOH awarded private providers, community-based, child-focused and family centered comprehensive behavioral health care. Serves children, adolescents and their families who may suffer from a variety of emotional, behavioral or social adjustment problems. Provides evaluation, treatment planning, direct treatment and case management through contract providers. Provides consultation to Dept. of Education personnel and private agencies.
Services Provided:	Adolescent/Youth Counseling Family Counseling Group Counseling Individual Counseling Mental Health Evaluation Psychiatric Case Management
Eligibility:	Special education students (emotionally disturbed and learning disabled) ages 4 - 20.
Cost:	Free
Contact Info:	65 Makaena Pl. Suite 107 Kaunakakai, HI 96748 (808) 243-1251 Main (808) 553-9859 Fax Email: webmail@mail.health.state.hi.us

